

Situación de los monitoreos socio-ecológico en los Andes



CONDESAN
Consejo para el Desarrollo Sostenible
de la Ecorregión Andina



futurearth
research for global sustainability



Los Andes y el cambio ambiental



- Relevancia de los Andes

- Sensibilidad

Importancia de los monitoreos

Necesidad de integración

Objetivos particulares / métodos

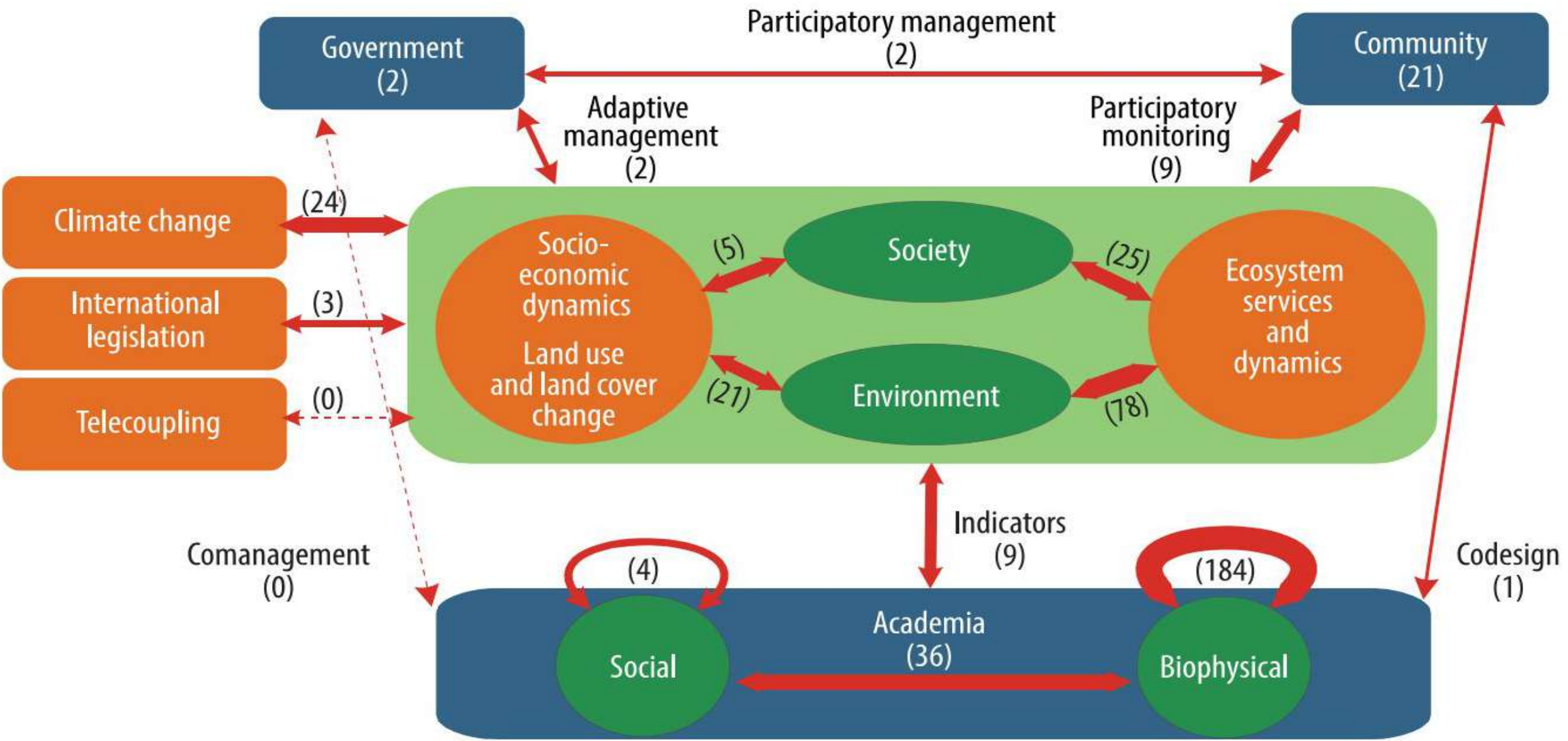
- Desarrollo de un modelo conceptual
- Cuantificación de esfuerzos
- Identificación de gaps de conocimiento / transferencia / manejo.

MODELO CONCEPTUAL

- Conversatorio
- Búsqueda bibliográfica
- Discusión
- Síntesis

BÚSQUEDA DE REDES DE MONITOREO

- **Encuestas:** 59 respondidas (425 enviadas)
- **Búsqueda bibliográfica:** 48 válidas (2343 citas iniciales)
- **Redes de monitoreo:** 39



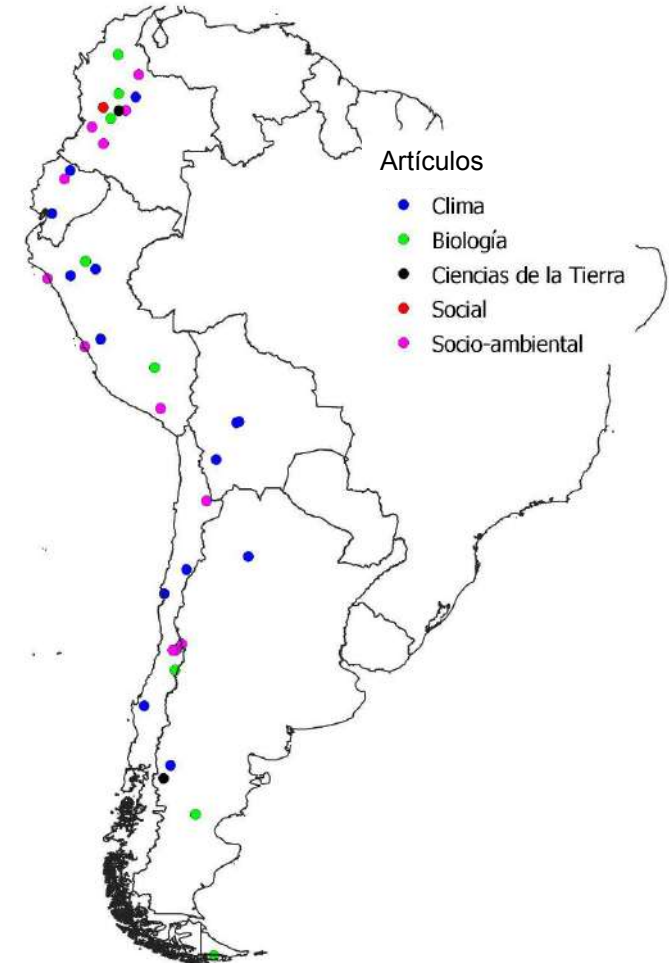
Carilla, J., Aráoz, E., Acosta, O. O., Malizia, A., Malizia, M., Jimenez, Y., ... & Llambí, L. D. (2023). Long-term environmental and social monitoring in the Andes: State of the art, knowledge gaps, and priorities for an integrated agenda. *Mountain Research and Development*, 43(2), A1-A9.

BÚSQUEDA DE REDES DE MONITOREO

ENCUESTAS

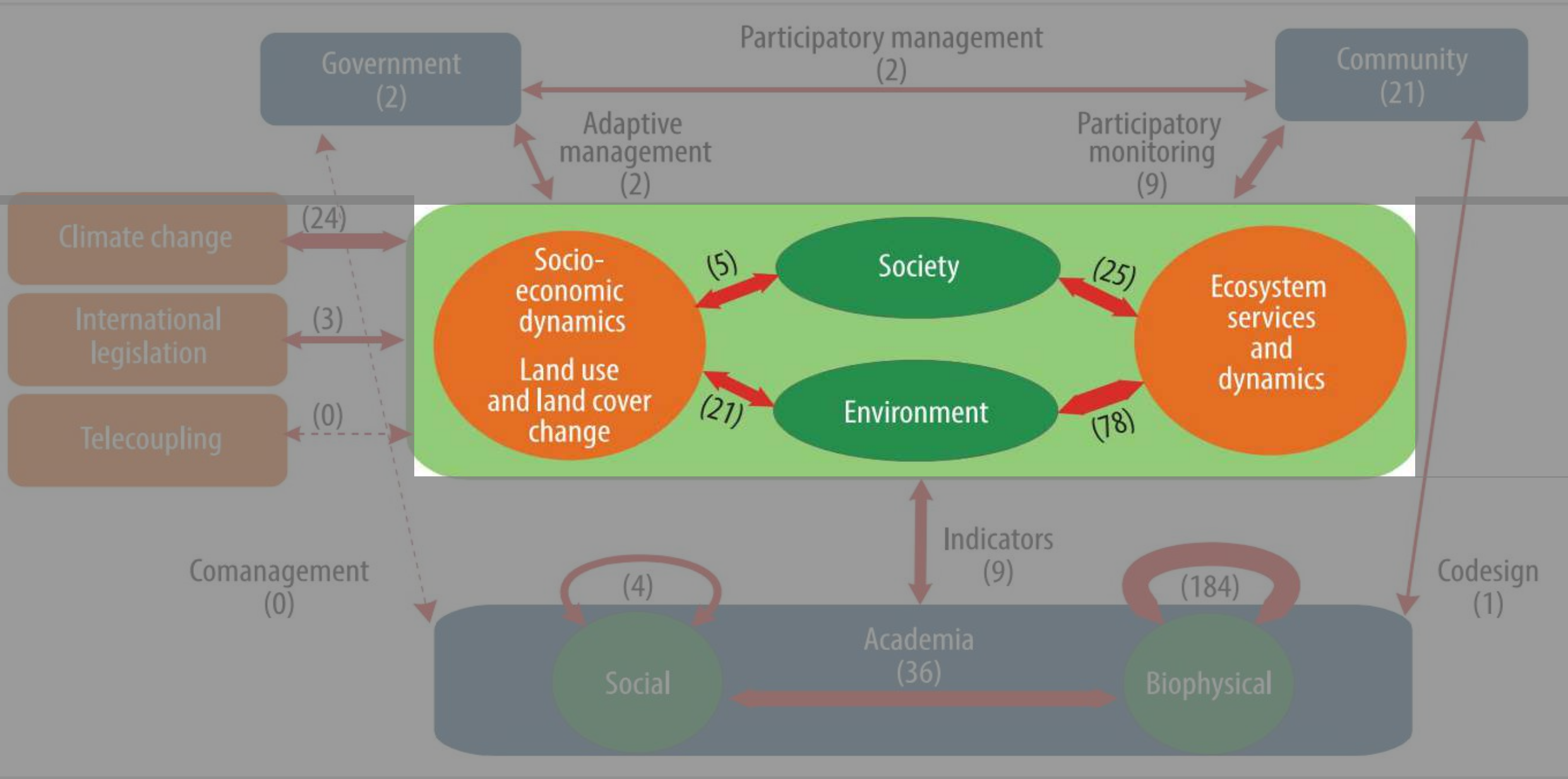


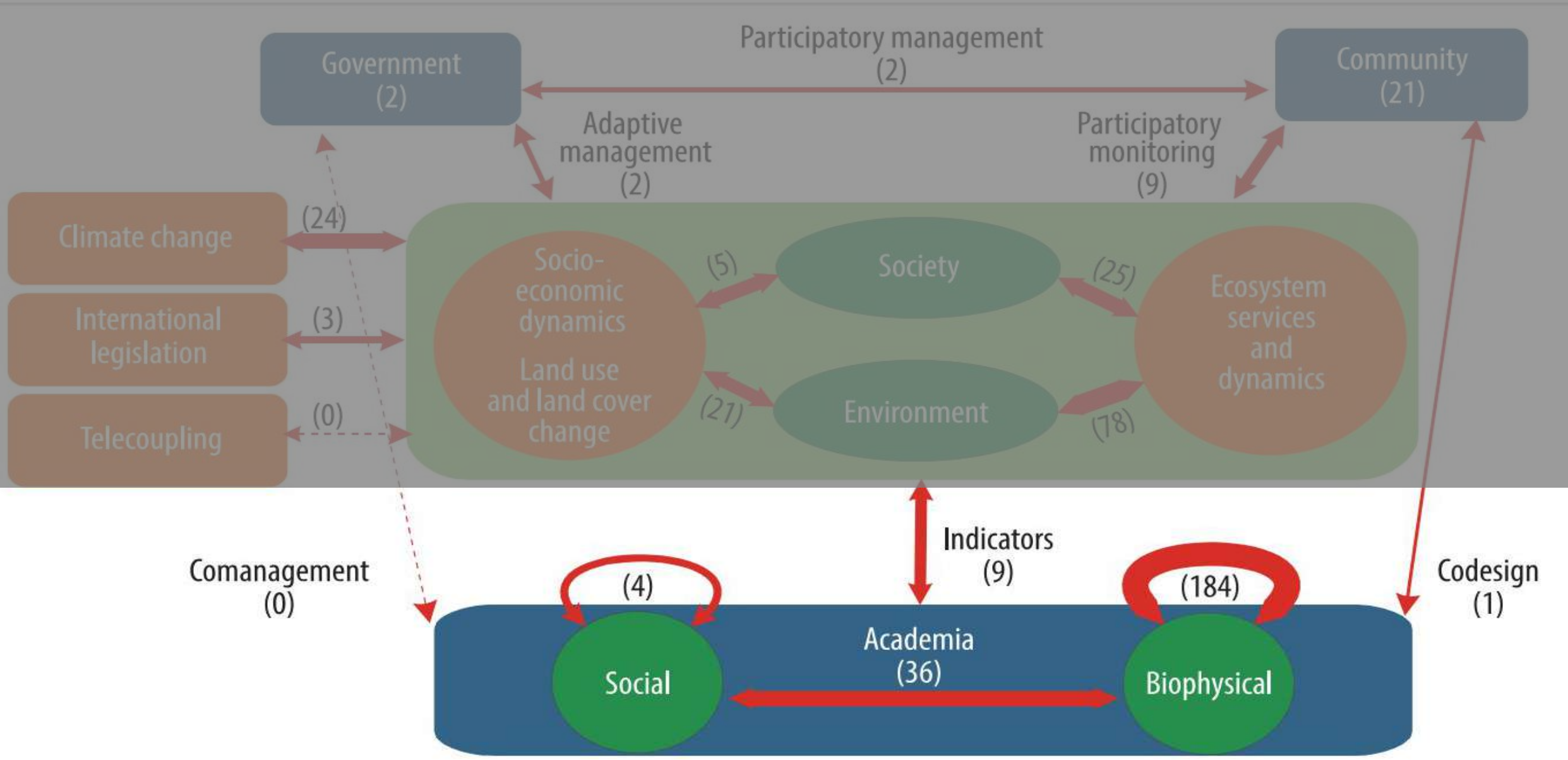
BÚSQUEDA BIBLIOGRÁFICA

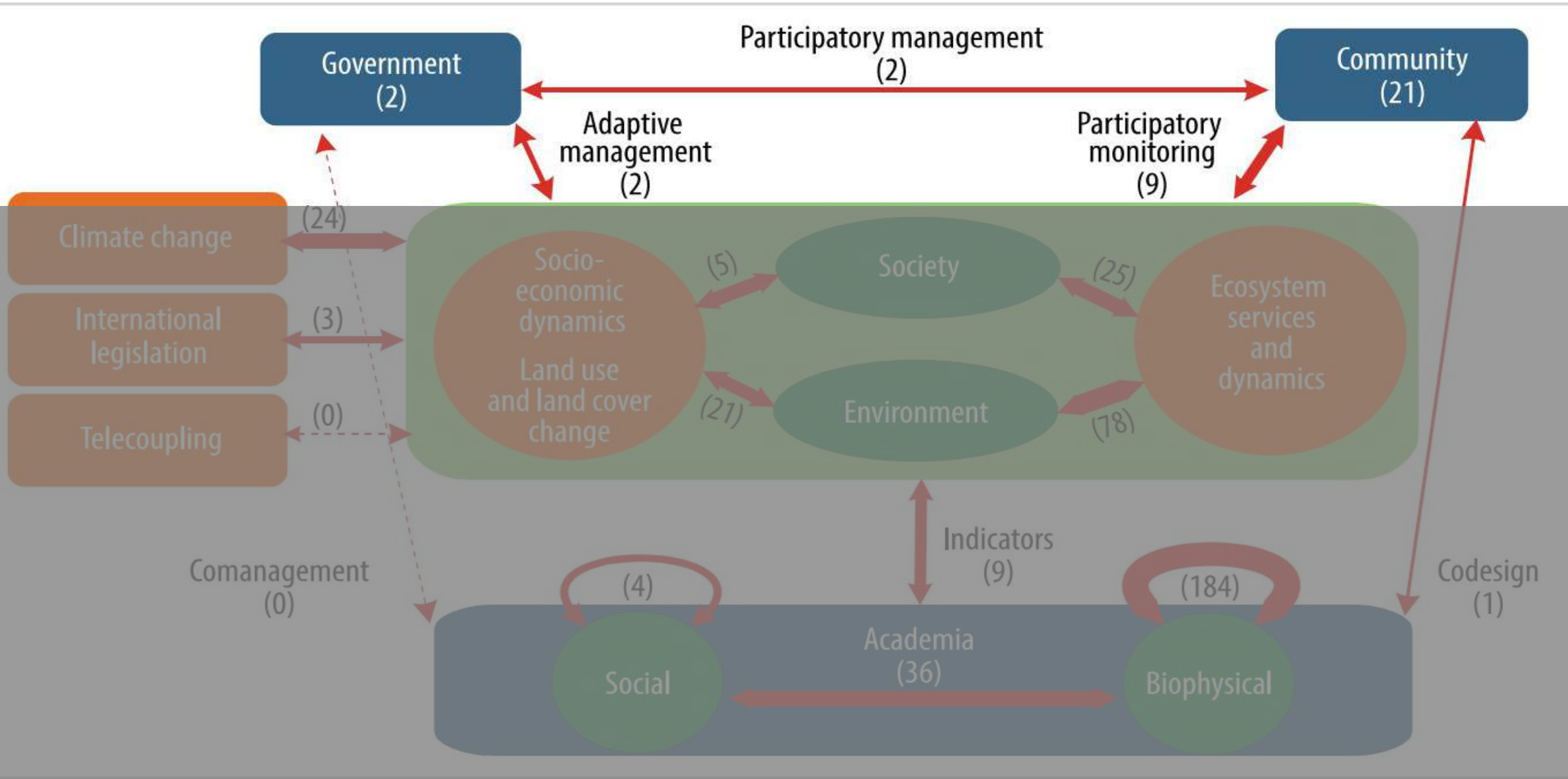


IDENTIFICACIÓN DE VACÍOS

- Modelo conceptual
- Cuantificar interacciones
- Identificar las interacciones menos frecuentes







Government
(2)

Participatory management
(2)

Community
(21)

Adaptive management
(2)

Participatory monitoring
(9)

- Climate change (24)
- International legislation (3)
- Telecoupling (0)

Socio-economic dynamics
Land use and land cover change

Society

Environment

Ecosystem services and dynamics

Comanagement
(0)

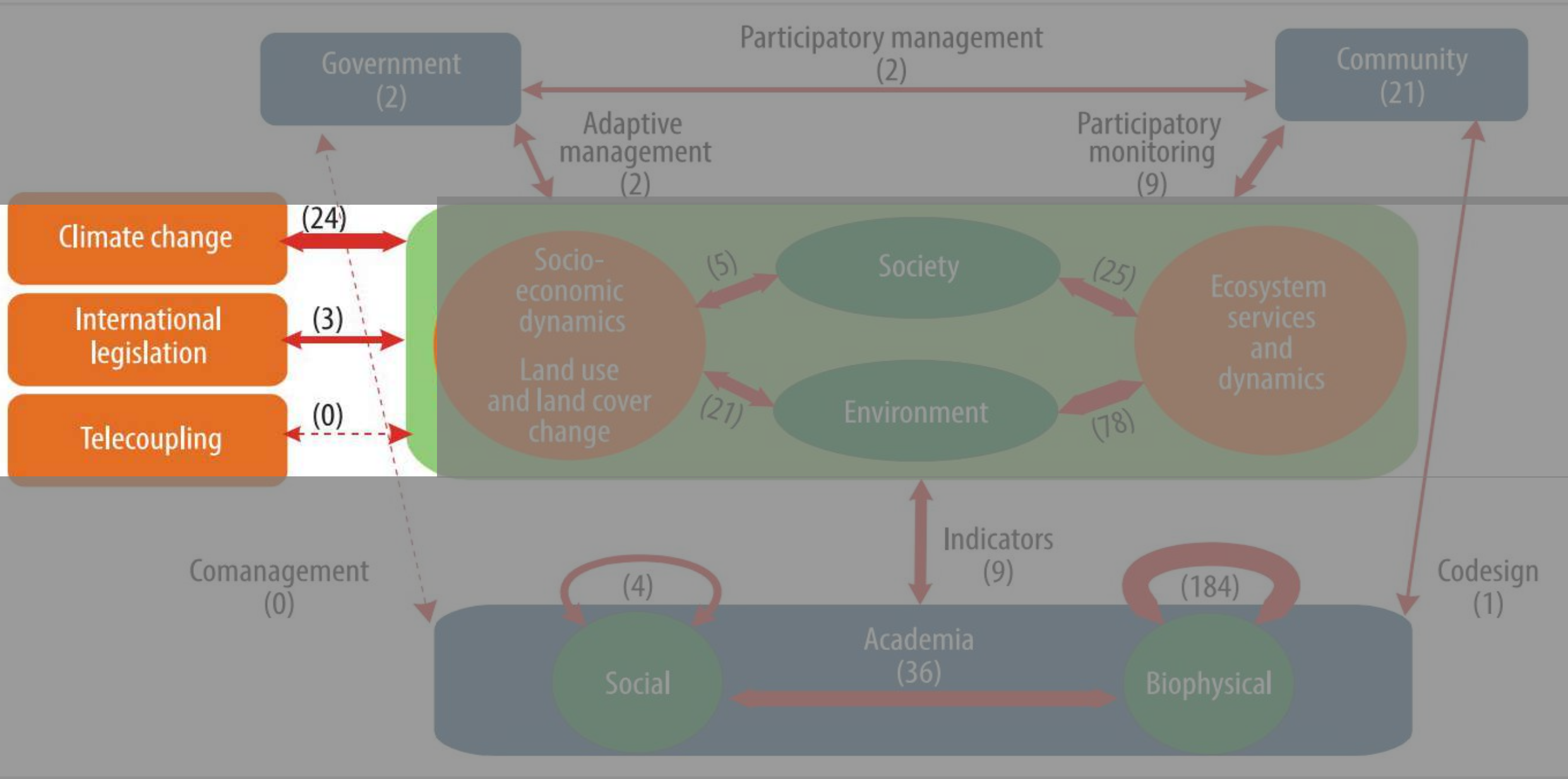
Academia
(36)

Social

Biophysical

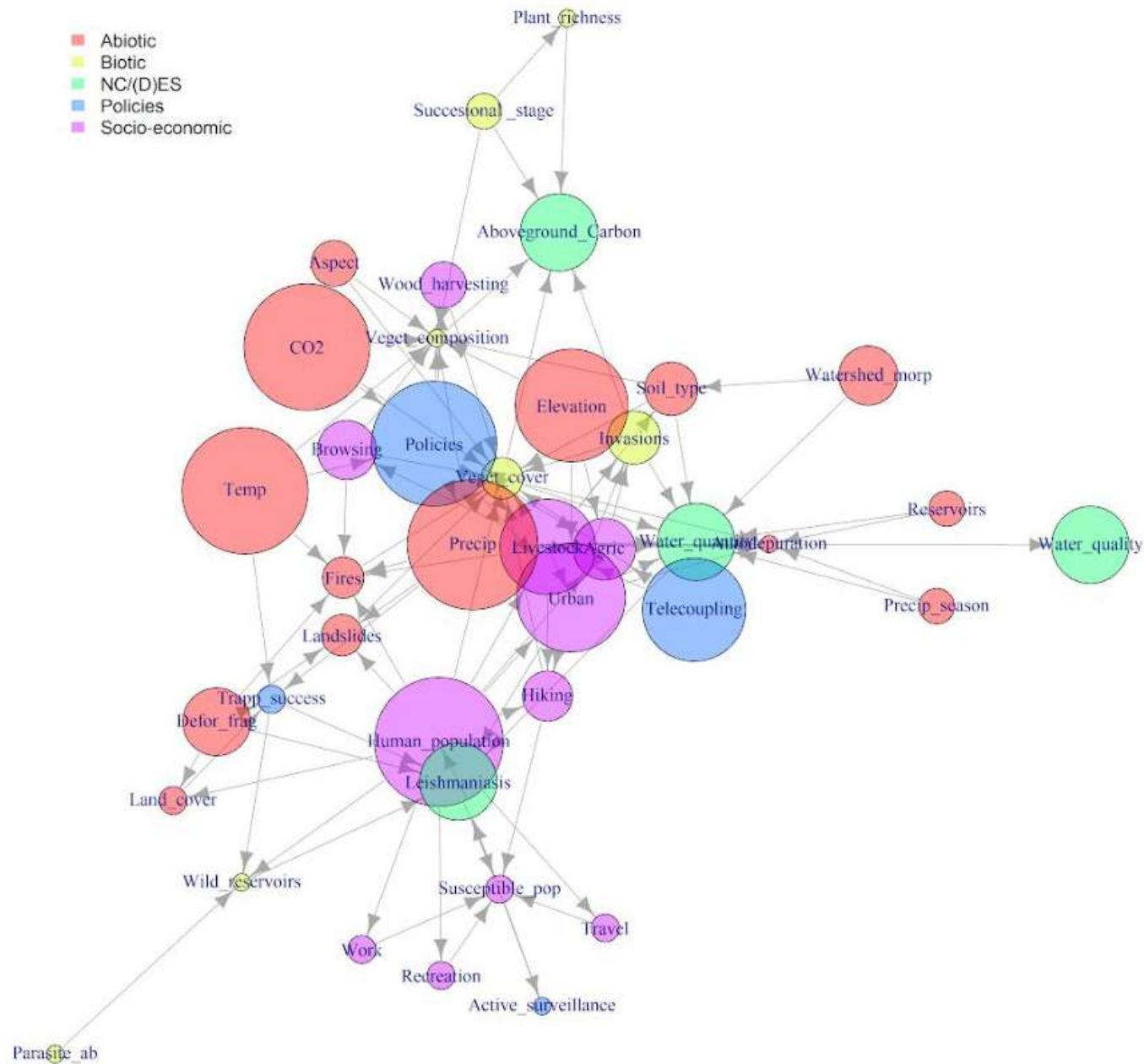
Indicators
(9)

Codesign
(1)



Principales líneas a desarrollar

- 1) Conceptualización del sistema
- 2) Funcionamiento del sistema
- 3) Teleacoples
- 4) Gobernanza e interacciones entre actores
- 5) Accesibilidad a la información

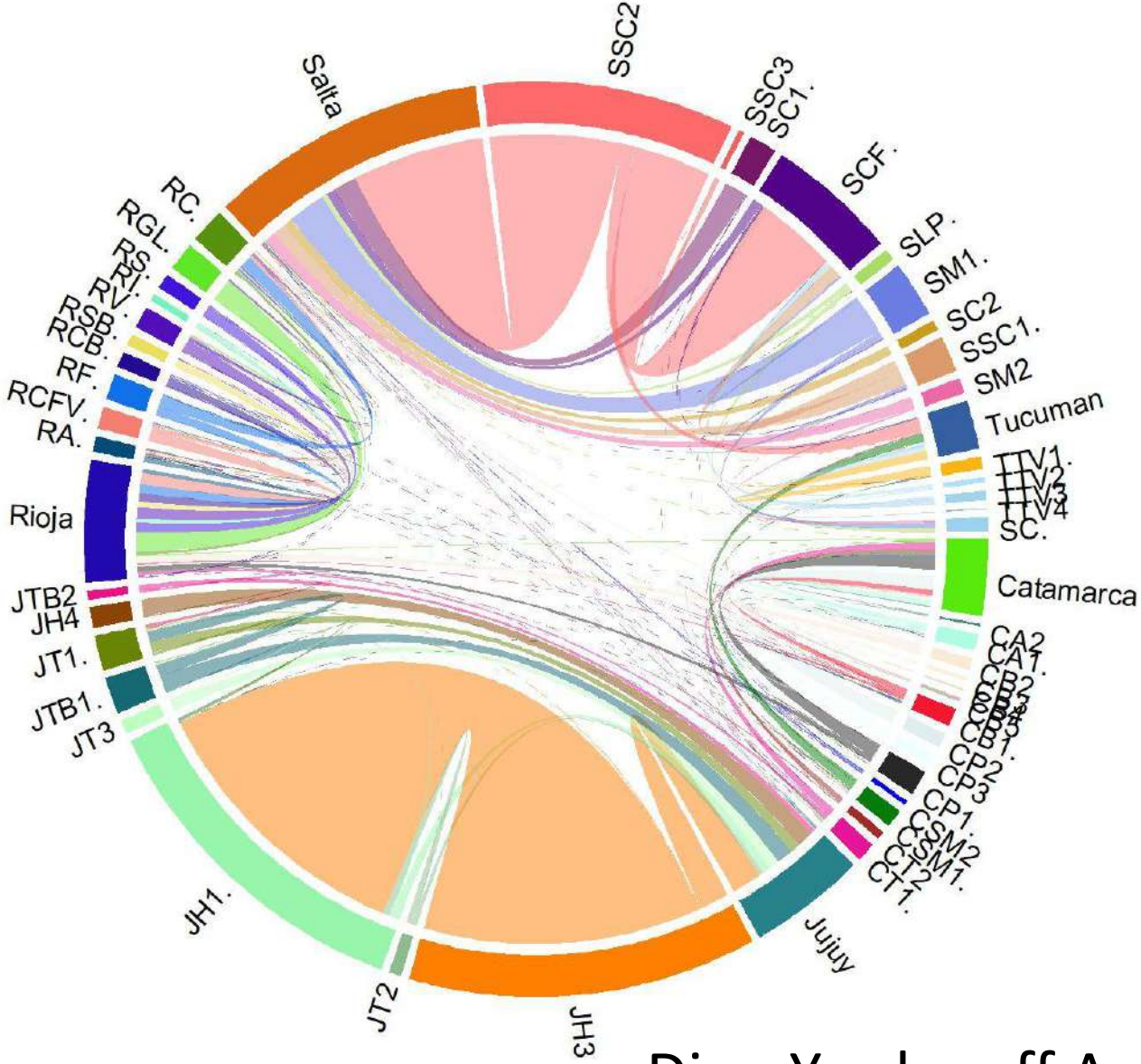


García Díaz, en preparación

Migración rural-urbana



Migraciones interjurisdiccionales

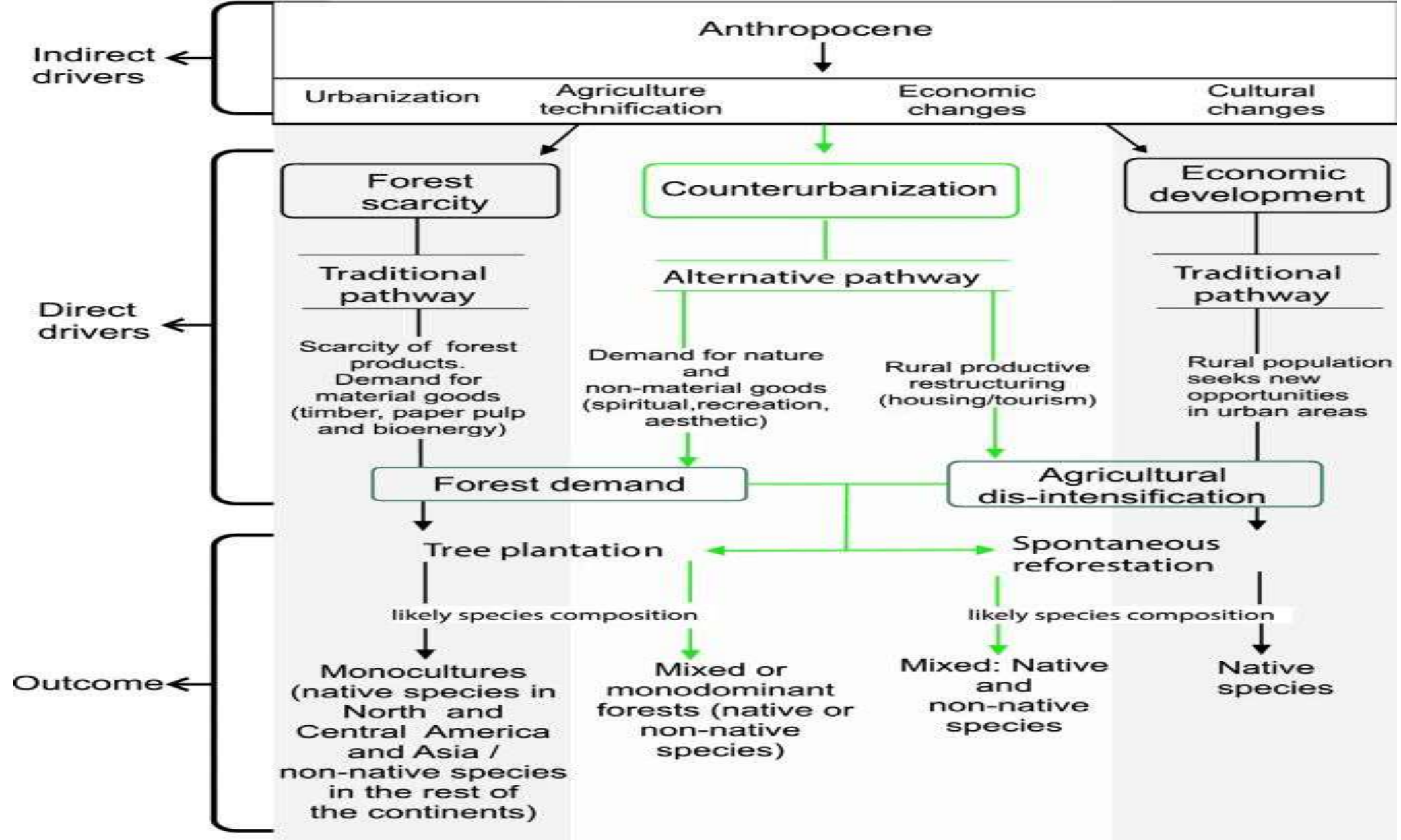


Dipp Yordanoff A, en preparación

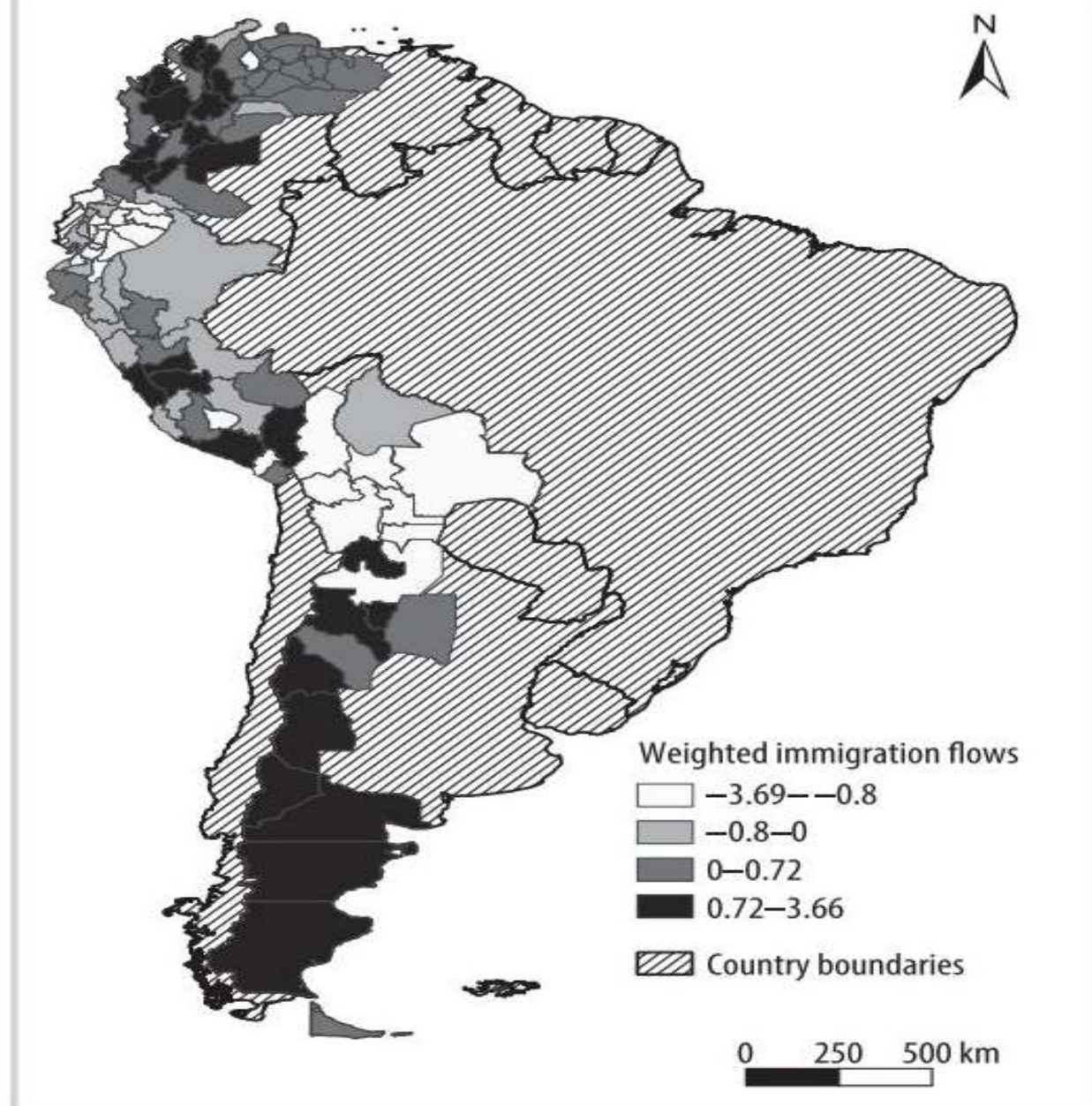
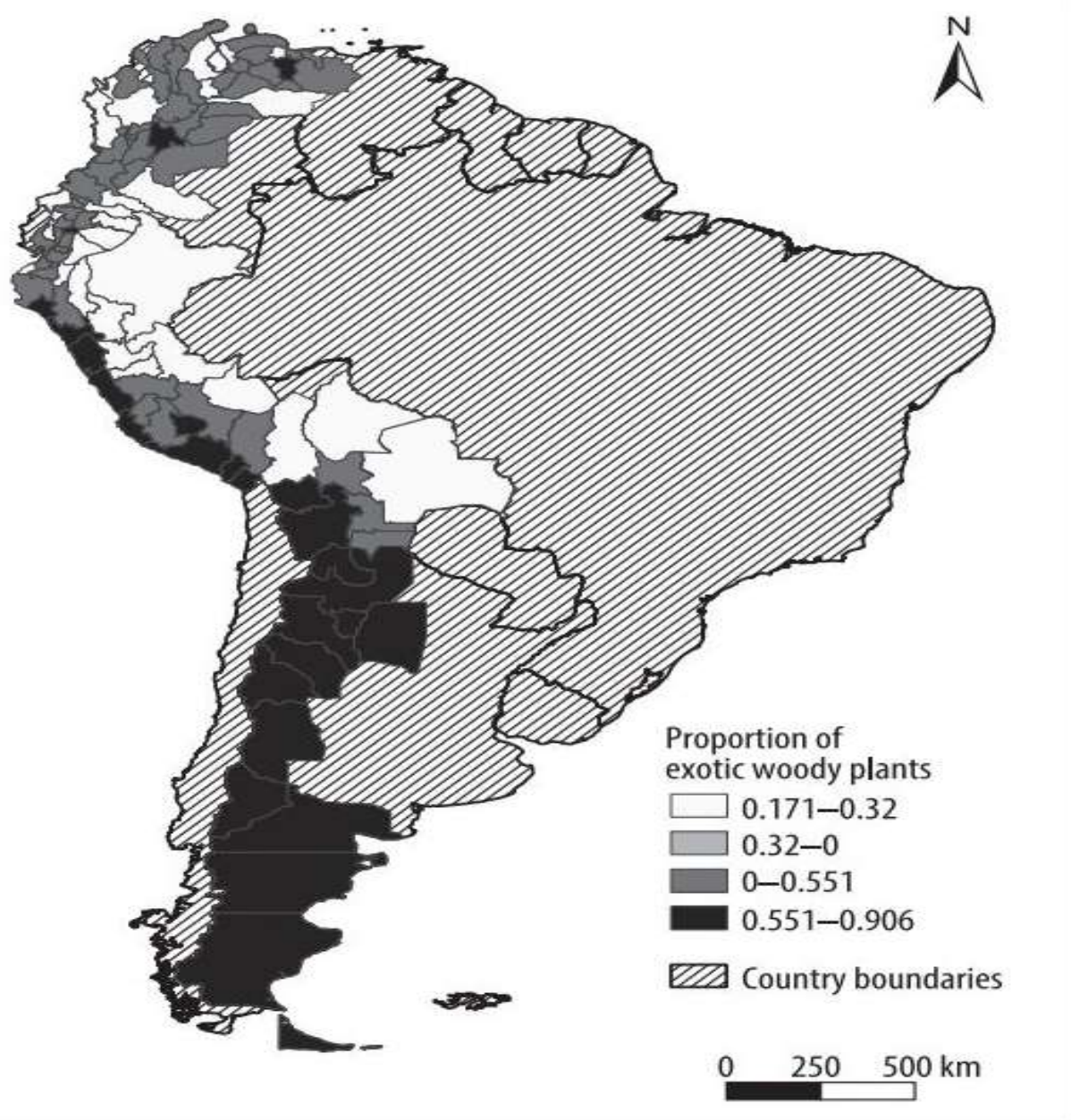


Cambios culturales

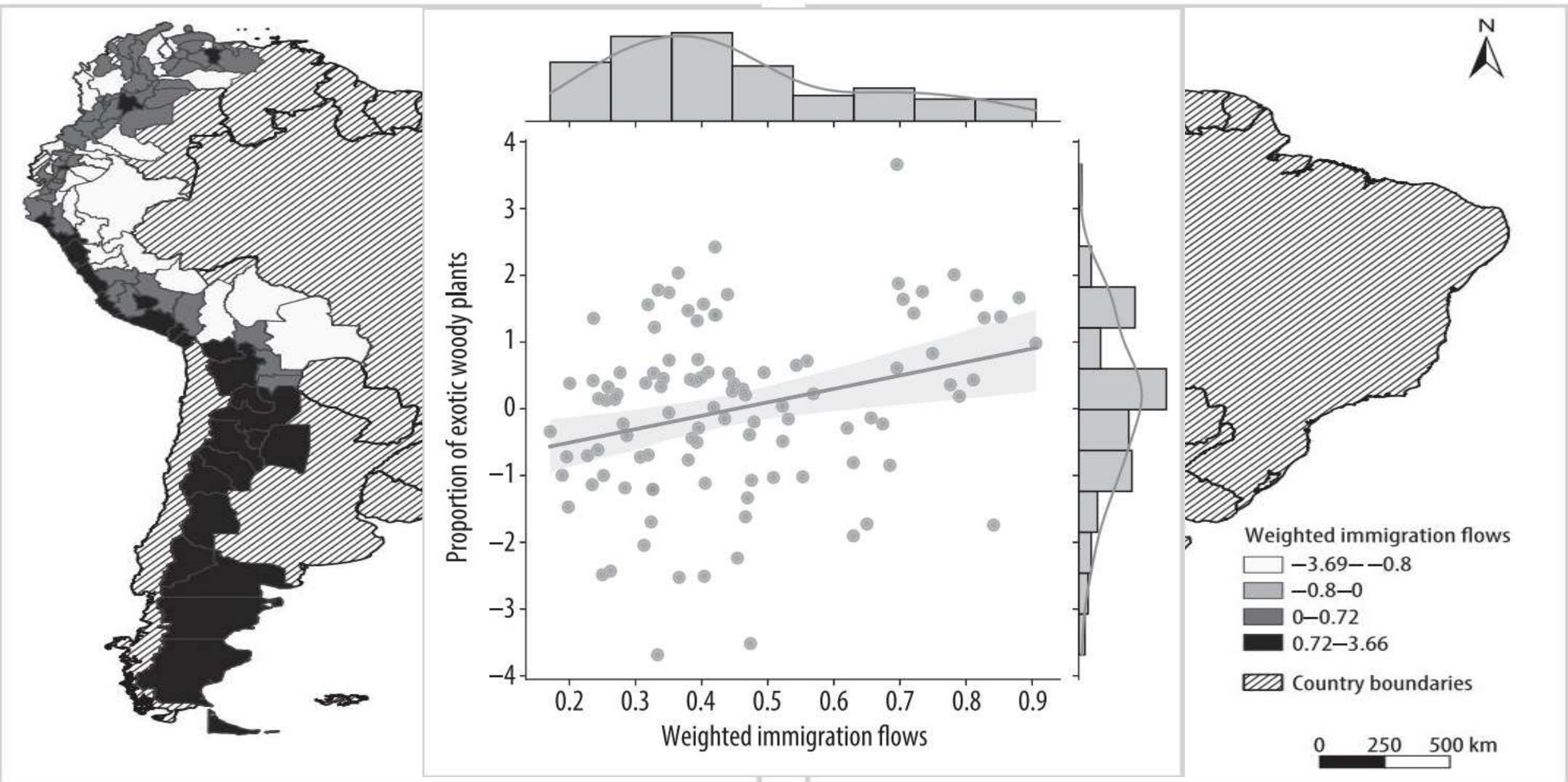




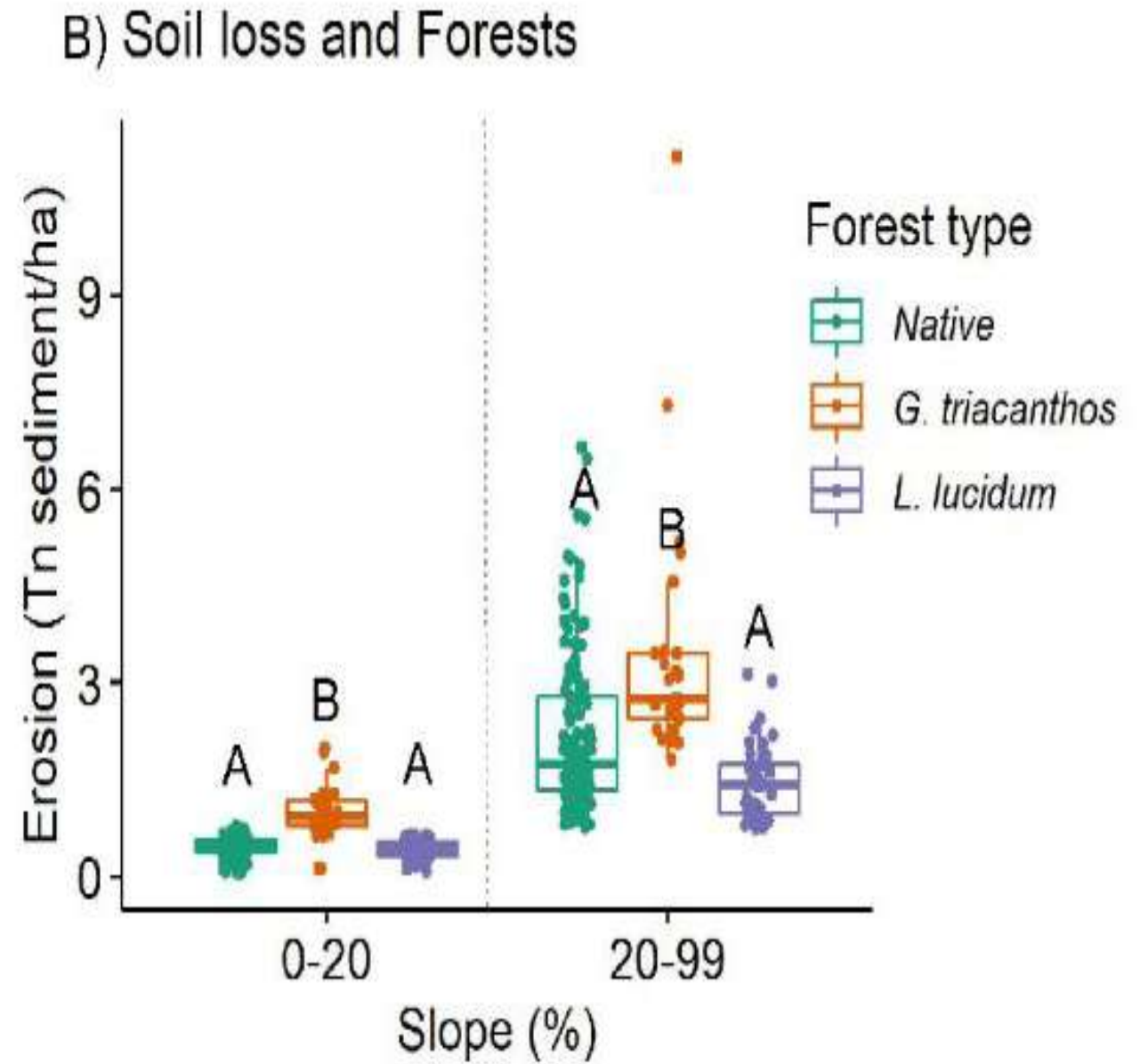
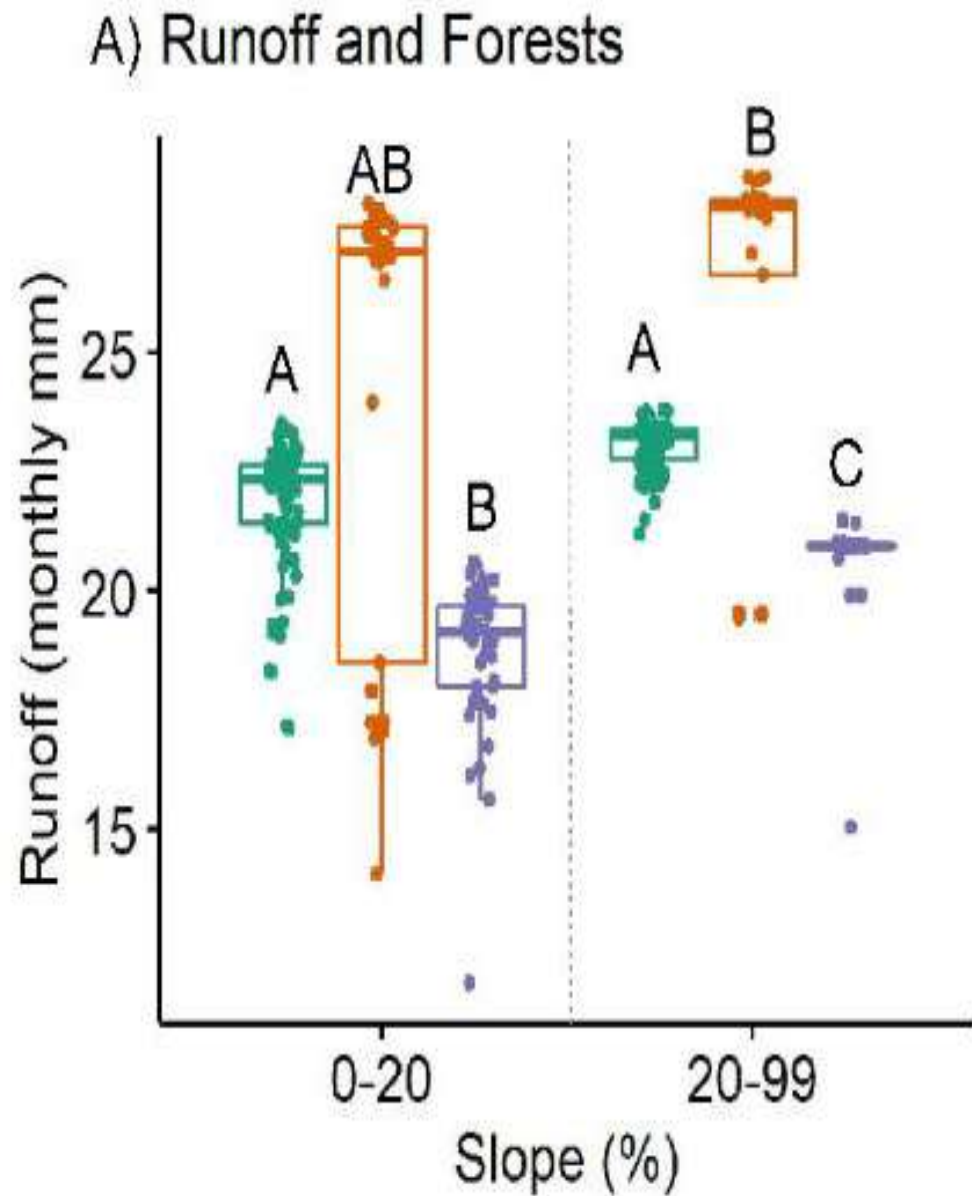
Jimenez, Y. G., Aráoz, E., Fernandez, R. D., Nanni, S., Ovejero, R., Paolini, L., & Grau, H. R. (2022). Counterurbanization: A neglected pathway of forest transition. *Ambio*, 51(4), 823-835.



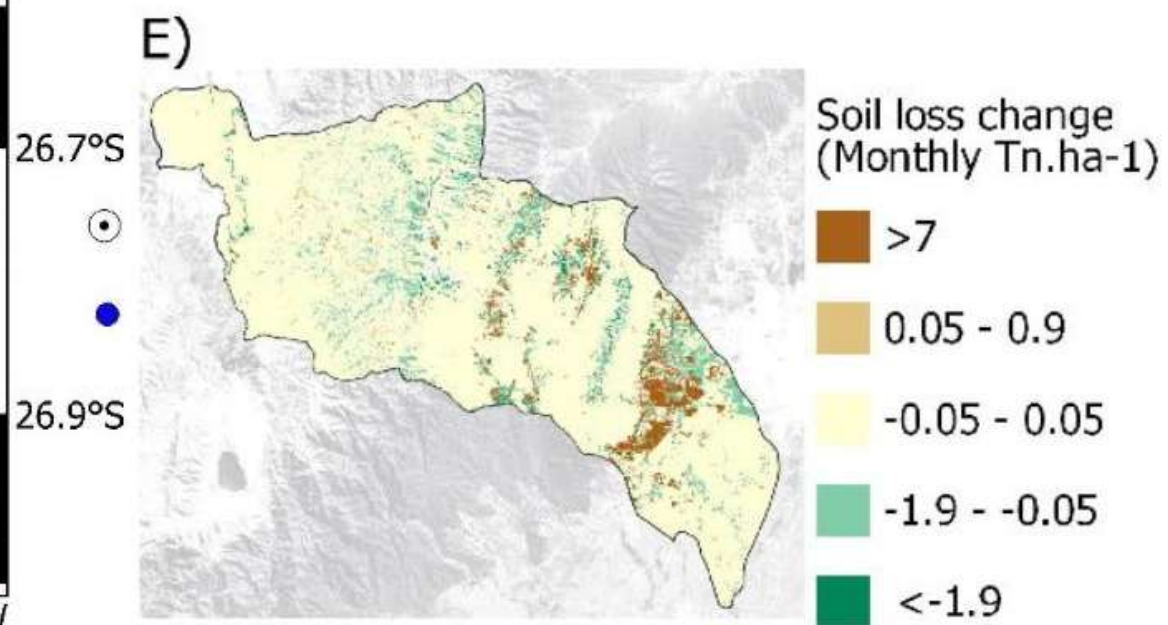
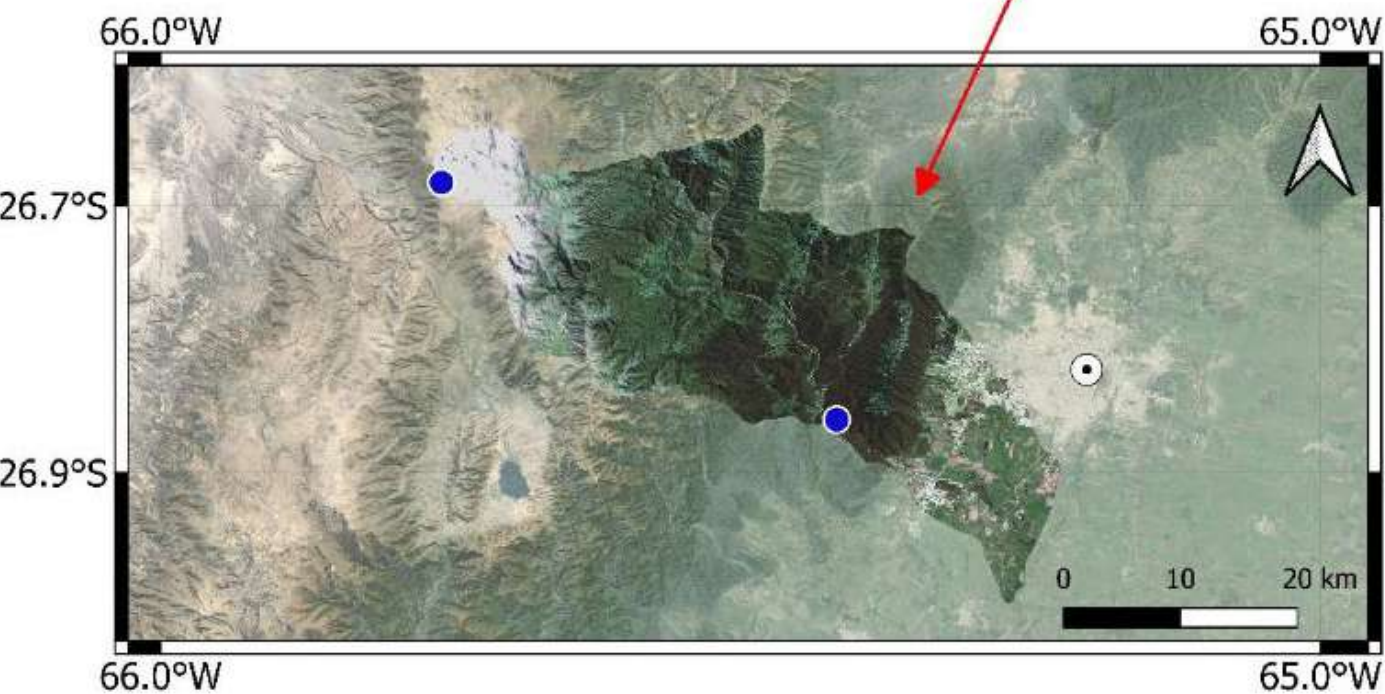
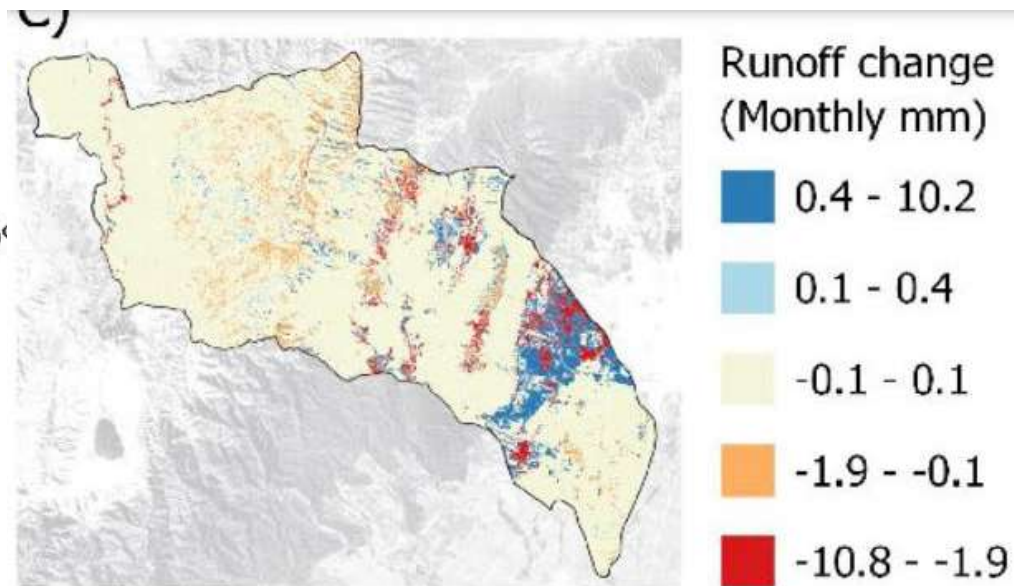
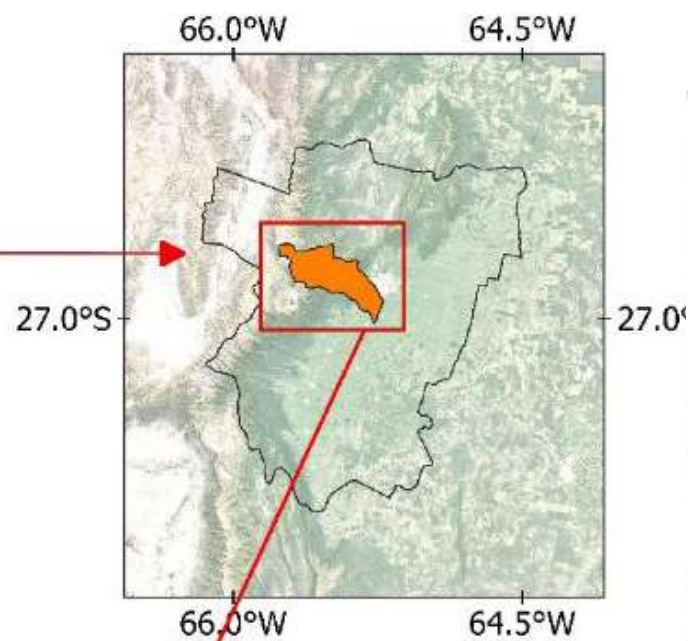
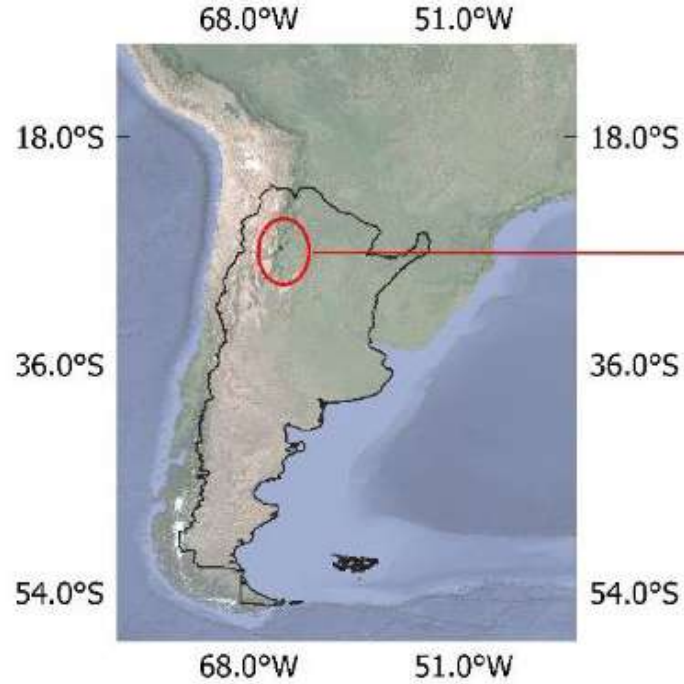
González MV, Montti L, Jimenez YG, Aráoz E (2024). Linking migration flows with the prevalence of exotic plant species in the Andes. *Mountain Research and Development*, 44(1), R1-R9.

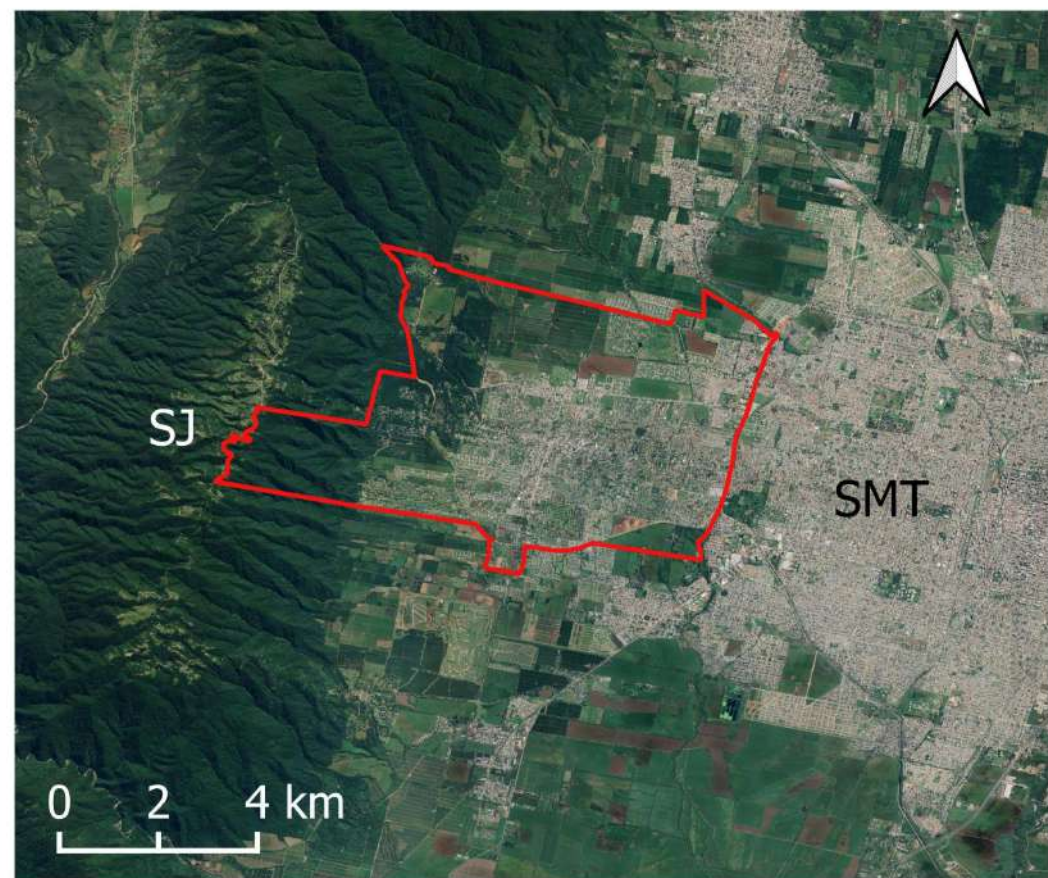
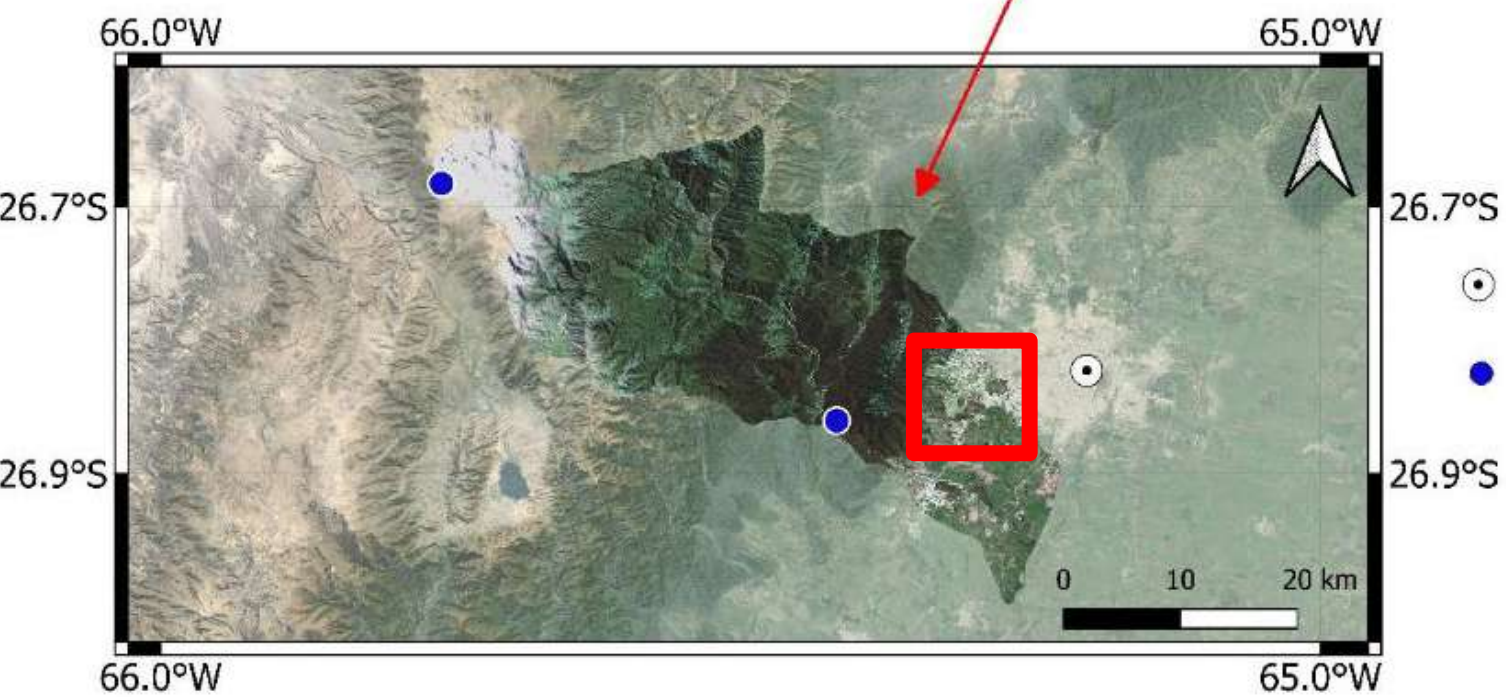
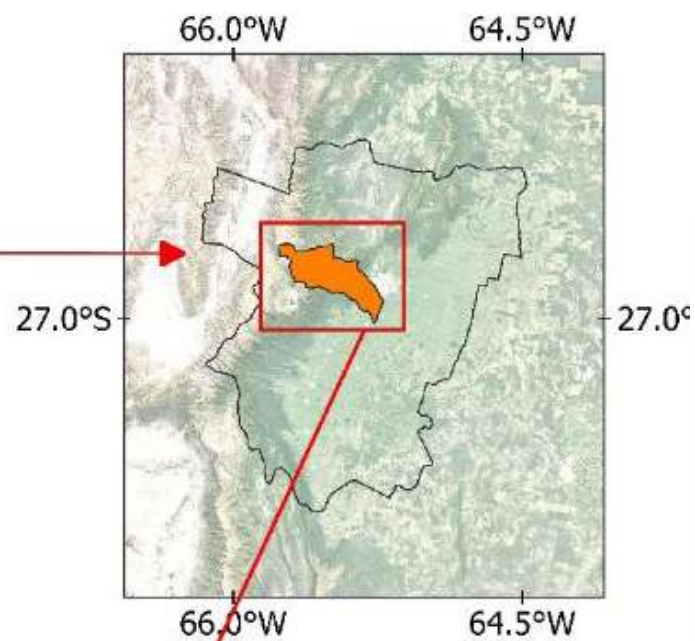
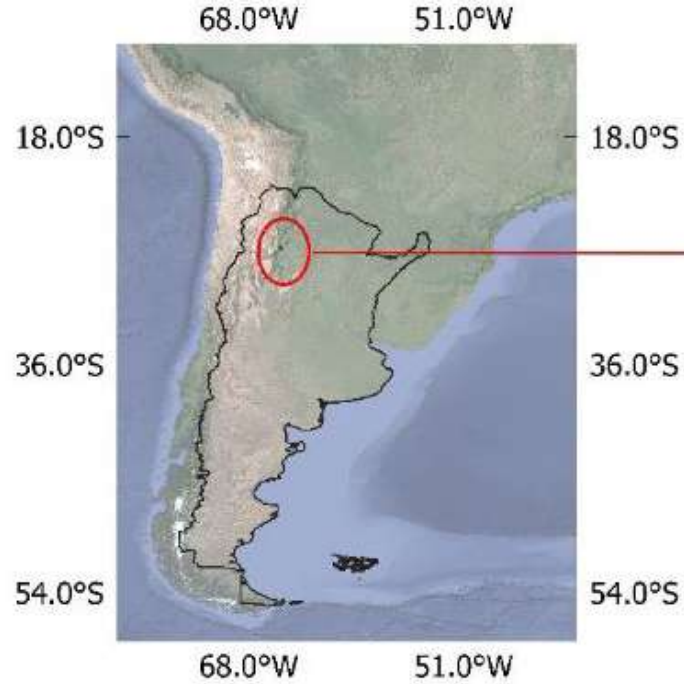


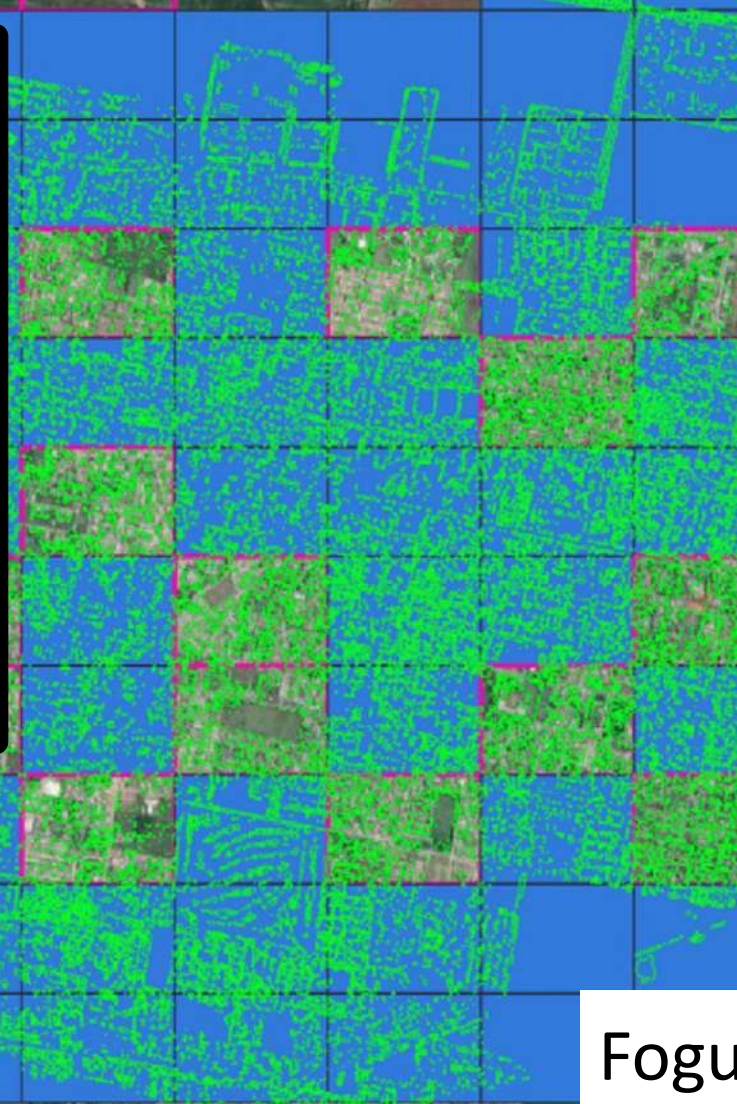
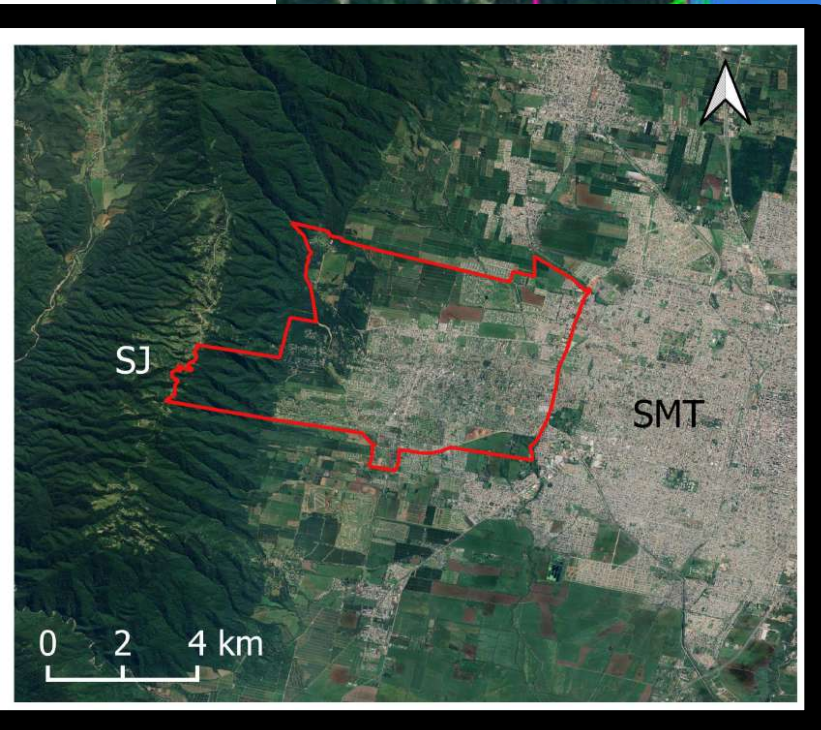
González MV, Montti L, Jimenez YG, Aráoz E (2024). Linking migration flows with the prevalence of exotic plant species in the Andes. *Mountain Research and Development*, 44(1), R1-R9.



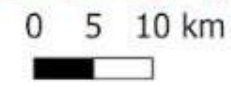
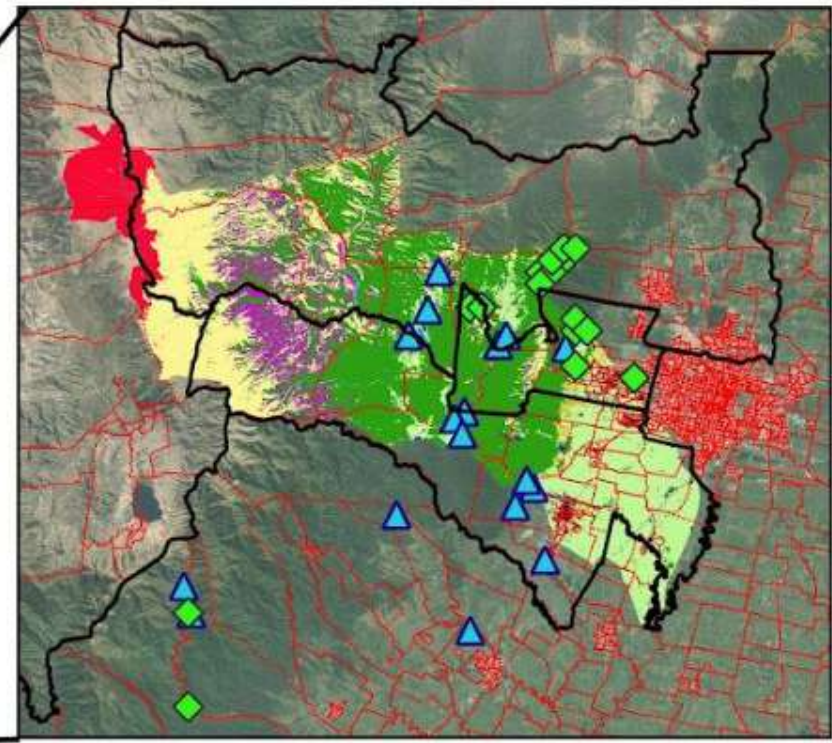
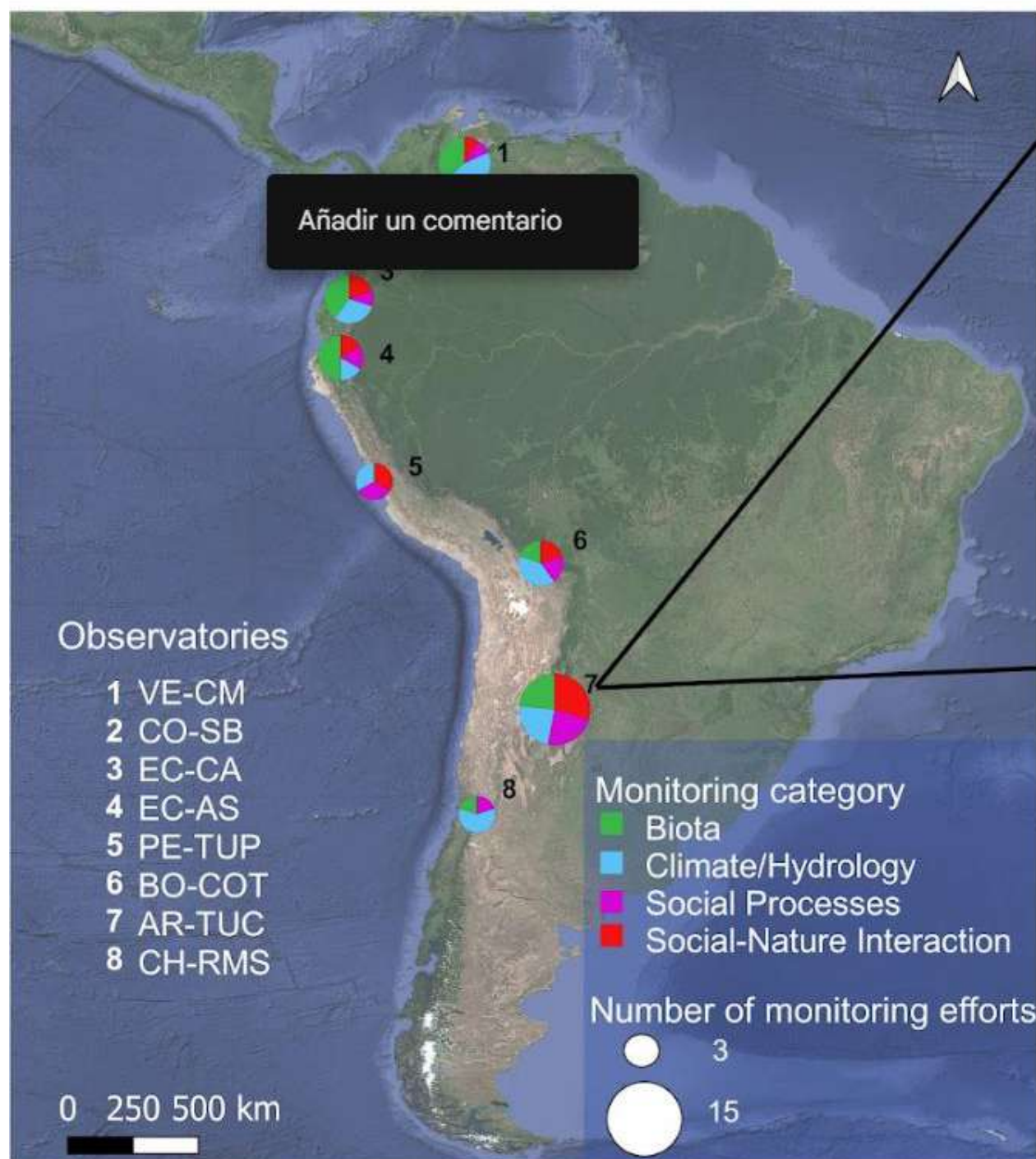
Jimenez YG, Aráoz E (2024). Modeling the Role of Novel Ecosystems in Runoff and Soil Protection: Native and Non-native Subtropical Montane Forests. *Water Resources Management*.







Foguet, en preparación



¡Muchas gracias!
ezequielaraoz@gmail.com



CONDESAN
Consortio para el Desarrollo Sostenible
de la Ecorregión Andina

